



• MDF



OPTICAL FIBRE SCREEN

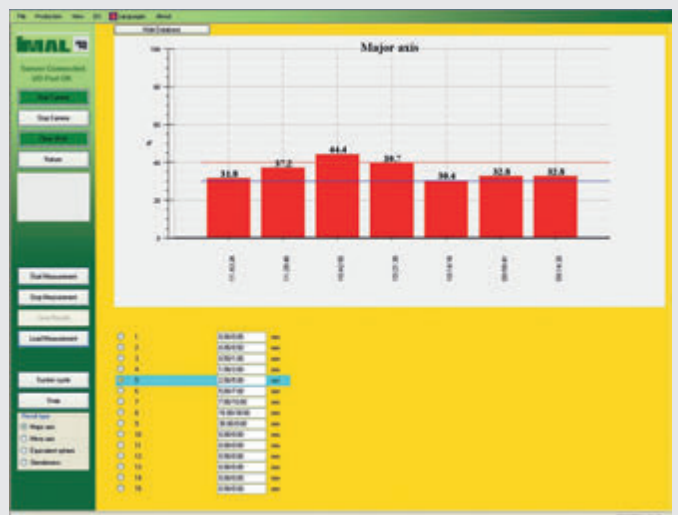
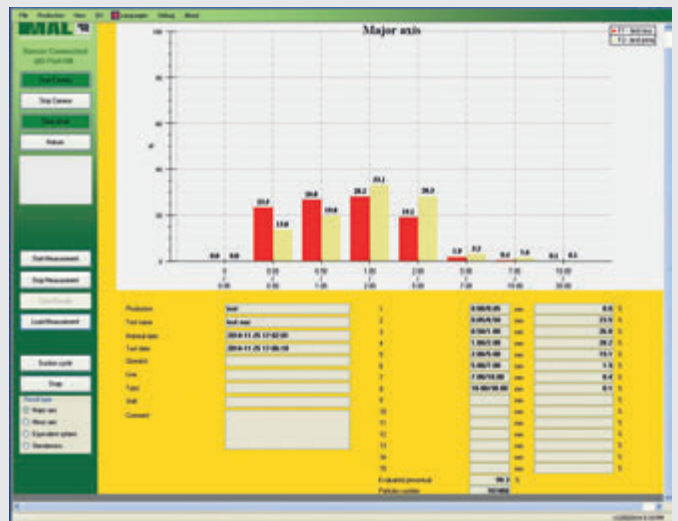
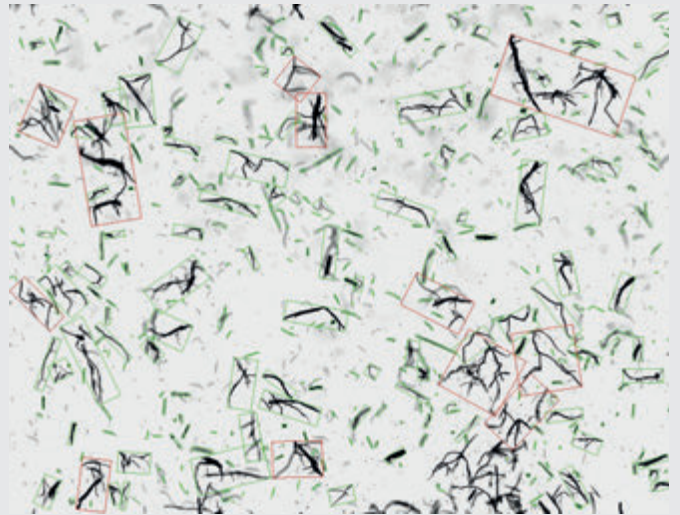
FIBERCAM ON-LINE

TO MEASURE THE PERCENTAGE OF THE VARIOUS GRANULOMETRIES OF THE FIBER

The on-line FiberCam is able to collect a sample of fibre and perform the granulometric analysis of the fibre within a few minutes. The application of optical technology permits an accurate measurement of the dimensions of the fibre, without ruining the fibre in any way (as happens with water systems), with elevated repeatability and rapid response times. The analysing software, in conjunction with the numerous images taken, calculates the actual length (extension) and width of the fibre even in cases where the fibres are laid one over the other. Denser lumps, on the other hand, are not analysed. The result of each test is stored in the local database and may be consulted over the company network. In addition, the test results may be printed with the figures and the graph showing the granulometry distribution. The on-line FiberCam can therefore reduce power requirements and help the Refiner disks to last longer by carrying out corrective actions in relation to fibre quality.

MAIN FEATURES

- Accurate measurement of the true dimensions
- Elevated repeatability
- Test performed rapidly
- Fibre quality may be monitored on line
- Reduced power requirements and possibility to correct the refiner.



TECHNICAL DATA

MEASURING RANGE	0.05 ÷ 30 mm
NO. OF SCREENS	up to 15 virtual sieves may be programmed
TEST TIME	4 ÷ 5 min
REPEATABILITY	error < 1%
MAX SCANS	up to 800,000 image/min
CLEANED AUTOMATICALLY AFTER EACH CYCLE	yes
DIMENSIONS	2000 x 1800 x 650 mm