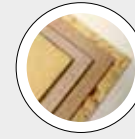


OPTICAL SORTER  
**CYCLOPS – All in one**

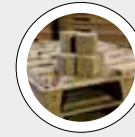
PATENTED



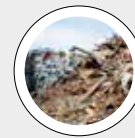
**BEST IN CLASS FOR:**



WOOD BASED PANELS:  
 MDF/HDF  
 PB/SPB



PRESSED WOOD PACKAGING:  
 PALLET BLOCKS



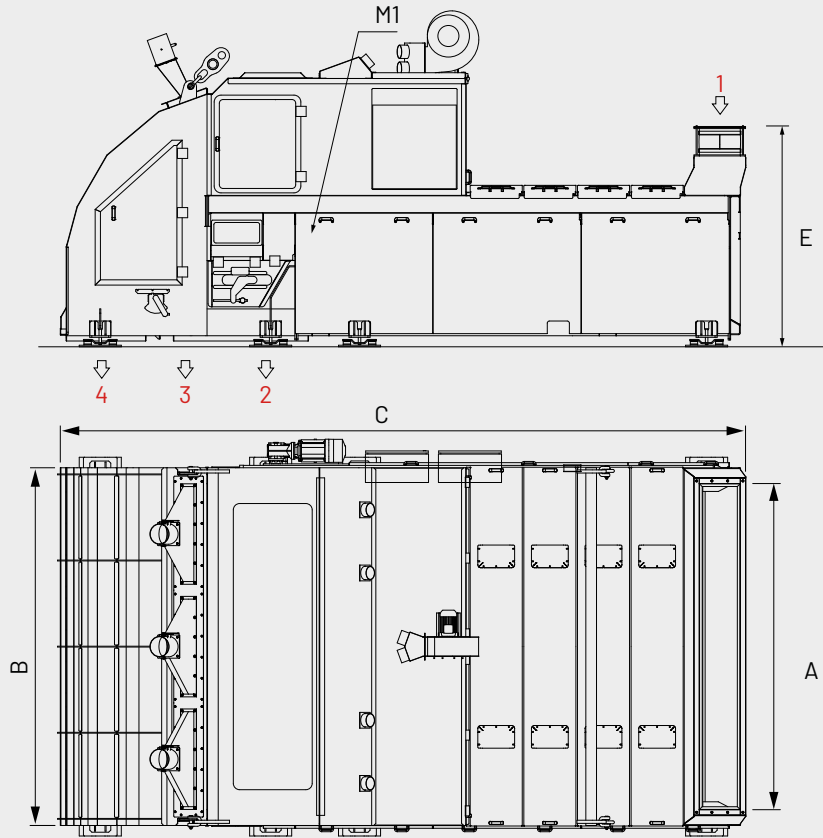
WOOD RECYCLING AND  
 WASTE TREATMENT:  
 WASTE

**TECHNICAL FEATURES**

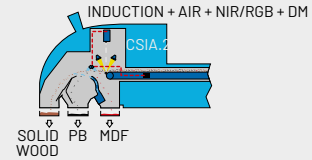
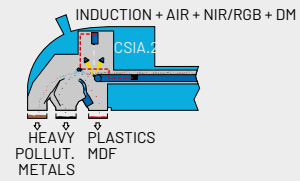
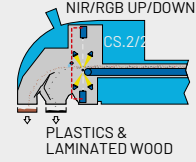
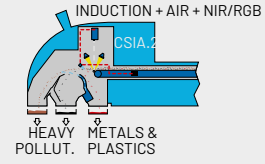
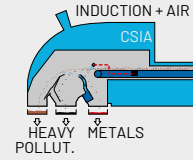
- High speed belt for monolayer particles transfer
- High efficiency and constant performance of digital camera
- Integrated sw control system
- Selecting unit with compressed air
- Selecting unit with blower
- Discharge hopper with selecting flap
- Heavy construction for continuous operation.

**BENEFITS**

- Possibility of feeding any type of raw wood
- Removal of many kind of pollutants, plastic, metals, inerts and heavy material
- Very high efficiency
- Compact layout
- Low maintenance
- Easy control and adjustment.



1 = INLET MATERIAL  
 2 = POLLUTANTS AND METALS  
 3 = HEAVY MATERIAL  
 4 = CLEANED MATERIAL  
 M1 = BELT ROTATION



| MODEL     | OVERALL DIMENSIONS mm |      |      |      |      |
|-----------|-----------------------|------|------|------|------|
|           | A                     | B    | C    | D    | E    |
| CS.1.1000 | 1000                  | 1740 | 6460 | 3000 | 1910 |
| CSIA.1000 | 1000                  | 1740 | 6460 | 3000 | 1910 |
| CS.2.2000 | 2000                  | 2730 | 6460 | 3000 | 1910 |
| CSIA.2000 | 2000                  | 2730 | 6460 | 3000 | 1910 |
| CS.3.3000 | 3000                  | 3730 | 6460 | 3000 | 1910 |
| CSIA.3000 | 3000                  | 3730 | 6460 | 3000 | 1910 |

| MODEL     | CAPACITY             |                    | INSTALLED POWER kW |      | EXHAUST AIR FLOW (m³/h) |             |
|-----------|----------------------|--------------------|--------------------|------|-------------------------|-------------|
|           | MICRO CHIPS 10-30 mm | MACRO CHIPS >30 mm | M1                 | M2   | MICRO CHIPS             | MACRO CHIPS |
| CS.1.1000 | 35 m³/h              | 60 m³/h            | 3                  | 1,1  | 3000                    |             |
| CSIA.1000 | 65 m³/h              | 65 m³/h            | 3                  | -    | 10000                   |             |
| CS.2.2000 | 70 m³/h              | 120 m³/h           | 4                  | 1,50 | 4000                    |             |
| CSIA.2000 | 130 m³/h             | 130 m³/h           | 4                  | -    | 20000                   |             |
| CS.3.3000 | 95 m³/h              | 180 m³/h           | 5                  | 4    | 5500                    |             |
| CSIA.3000 | 195 m³/h             | 195 m³/h           | 5                  | -    | 30000                   |             |

| MODEL     | AIR BLADE m³/h | LIGHTS POWER KW | AIR FOR NIR CAMERA m³/h |
|-----------|----------------|-----------------|-------------------------|
| CS.1.1000 | -              | 1,7             | 1500                    |
| CSIA.1000 | 1x11           | -               | -                       |
| CS.2.2000 | -              | 3,4             | 3000                    |
| CSIA.2000 | 2x11           | -               | -                       |
| CS.3.3000 | -              | 5,1             | 4800                    |
| CSIA.3000 | 3x11           | -               | -                       |