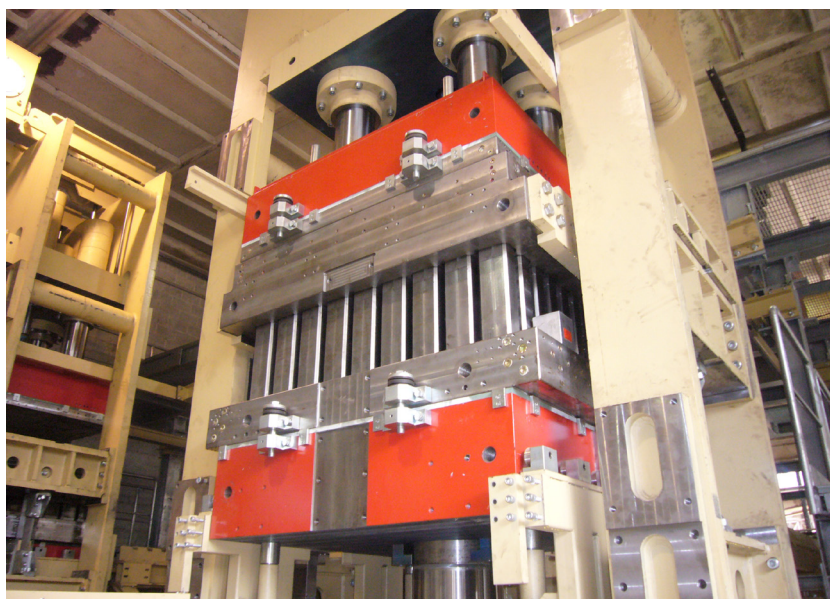


## SINGLE-OPENING PALLET BLOCK PRESS



**BEST IN CLASS FOR:**



PRESSED WOOD PACKAGING:  
PALLET BLOCKS

The single-opening press for pallet block production is able to produce all kinds of pallet blocks from all varieties of wood-based raw materials.

Press capacity varies from 70 to 90 m<sup>3</sup>/day depending on the pallet block format produced.

All pallet blocks are inspected one at a time for weight, dimensions and density, and an automatic feedback goes back to the press to ensure quality and compliancy with international standards.

A special control software system carries out an accurate real time analysis of production.





**AUTOMATIC PACKAGING SYSTEM**

