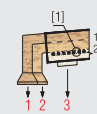


O = FEEDING
1...5 = FRACTIONS

M1 = SCREENING
BOX MOVEMENT

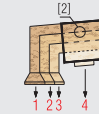
FOR DRY PARTICLES

2 Decks



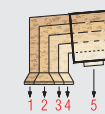
3 Fractions
SUPERSCREEN-2P-13-EJ-...

3 Decks



4 Fractions
SUPERSCREEN-3P-13-EJ-...

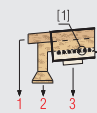
4 Decks



5 Fractions
SUPERSCREEN-4P-13-EJ-...

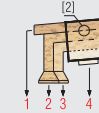
FOR CHIPS

2 Decks



3 Fractions
SUPERSCREEN-2P-13-EJ-...
SUPERSCREEN-2P-16-EJ-...

3 Decks



4 Fractions
SUPERSCREEN-3P-13-EJ-...
SUPERSCREEN-3P-16-EJ-...

[1] AC: Auto-cleaning ball-bouncing system for screens available for all decks
[2] A wide range of mesh sizes are available for any screening needs

SUPERSCREEN 13-16

1-STAGE SCREENS - 13-16 m² EACH DECK

MODEL	OVERALL DIMENSIONS mm										INSTALLED POWER kW	WEIGHT APPROX. kg
	A	B	C	D	E	F	G	H	I	L		
SUPERSCREEN 2P-13-EJ	7645	4300	3255	600	3855	2980	1900	3000	1500	960	11	13500
SUPERSCREEN 2P-13-CHIPS-EJ	7977	4300	3255	600	3855	2980	1900	3000	1500	960	11	13500
SUPERSCREEN 3P-13-EJ	8270	4300	3255	600	3855	2980	1900	3000	1500	960	11	14000
SUPERSCREEN 4P-13-EJ	8730	4300	3255	600	3855	2980	1900	3000	1500	960	11	14500
SUPERSCREEN 2P-16-EJ	7760	5050	3255	600	3855	2980	1900	3750	1875	1335	15	16000
SUPERSCREEN 2P-16-CHIPS-EJ	8200	5050	3255	600	3855	2980	1900	3750	1875	1335	15	16000
SUPERSCREEN 3P-16-EJ	7870	5050	3255	600	3855	2980	1900	3750	1875	1335	15	17200
SUPERSCREEN 4P-16-EJ	8195	5050	3255	600	3855	2980	1900	3750	1875	1335	15	17800