

WET CHIPS CLEANERS

WATER PIT



BEST IN CLASS FOR:



WOOD BASED PANELS:
MDF/HDF
PB/SPB



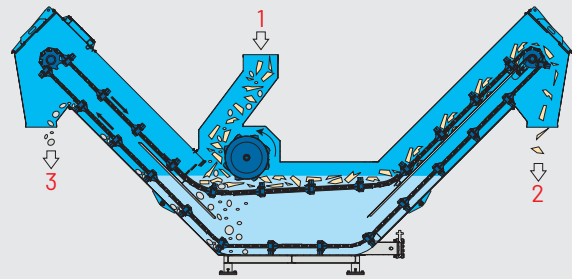
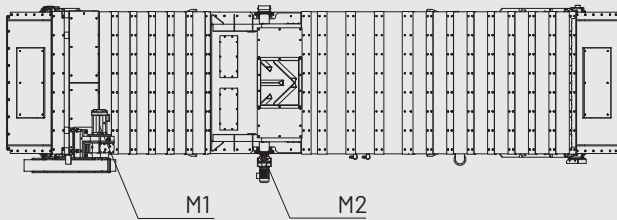
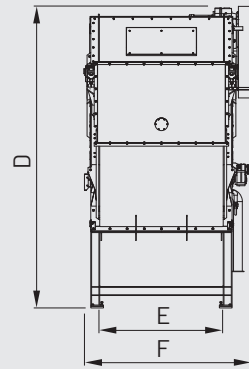
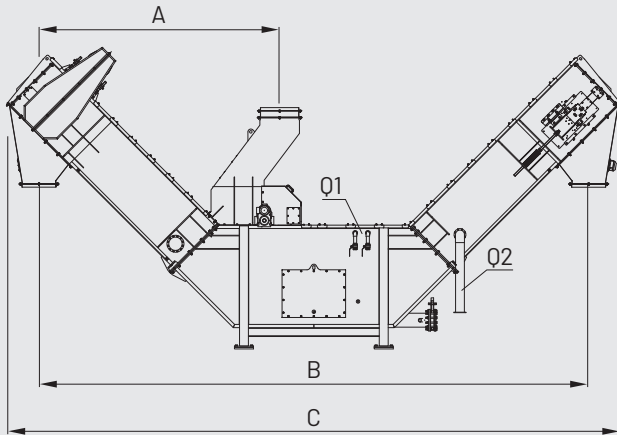
PRESSED WOOD PACKAGING:
PALLET BLOCKS

TECHNICAL FEATURES

- Wet cleaning system suitable to remove heavy pollutants out of the oversize chips
- Working principle based on difference in bulk density of infeed materials
- Chips flow is fed into a water pit where lighter materials float while the heavier pollutants such as stones, metals, etc. fall down and are removed by a chain conveyor
- On the opposite side the same conveyor removes the floating material, wood, etc. after draining.

BENEFITS

- Recovery of clean oversize chips to production
- High reliability
- Very low maintenance cost
- Low energy consumption.



1 = POLLUTED CHIPS
2 = CLEAN CHIPS

3 = HEAVY POLLUTANTS
Q1 = FILLING WATER

Q2 = SAFETY DRAIN
TUBE

M1 = CHAIN MOTOR
M2 = ROTOR MOTOR

MODEL	OVERALL DIMENSIONS mm					
	A	B	C	D	E	F
WP.1000	3788	8653	9665	4632	1000	1635
WP.2000	3788	8653	9665	4632	2000	2635

MODEL	CAPACITY BULK CHIPS		TANK CAPACITY APPROX. m ³	WATER CONSUMPTION l/min - top	INSTALLED POWER kW		WEIGHT WITHOUT WATER APPROX. kg
	m ³ /h	t/h*			M1	M2	
WP.1000	29	4,4	5,5	30	4	2,2	10000
WP.2000	58	8,7	11	60	5,5	3	12600

*With bulk density 150 kg/m³ b.d.