

BELT SCALES

BS

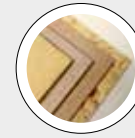
FOR CHIPS, SAWDUST, SHAVINGS, FIBER, WET PARTICLE

**TECHNICAL FEATURES**

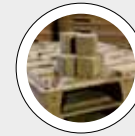
• Weighing-dosing of chips, sawdust, shavings, wet & dry particles • Belt conveyor provided of weighing bridge and precision load cell • Weighing belt automatic tensioning system • Self-centering system for the weighing belt • Drive system • Encoder to detect the actual speed of the weighing belt • Calibration chain • Microprocessor including all functions for electronic calibration.

BENEFITS

• Very high weighing accuracy, higher than +/- 0,5 % related to full scale value • Employment range from 20 to 100% of full scale value • Full scale value, freely settable • Easy testing by calibrating chain • High efficiency and reliability • Very low maintenance.

BEST IN CLASS FOR:

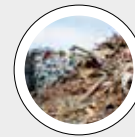
WOOD BASED PANELS:
MDF/HDF
PB/SPB
OSB/LSB/FOSB
INSULATION BOARDS



PRESSED WOOD PACKAGING:
PALLET BLOCKS

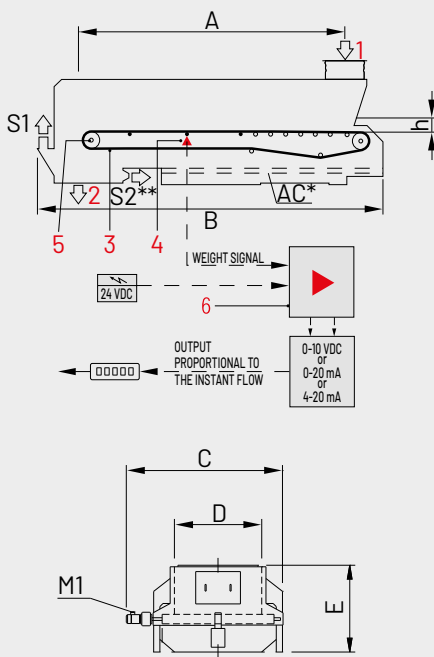


PELLETS & ENERGY:
WOOD PELLETS AND
BLACK PELLETS
LIME



WOOD RECYCLING AND
WASTE TREATMENT:
WASTE

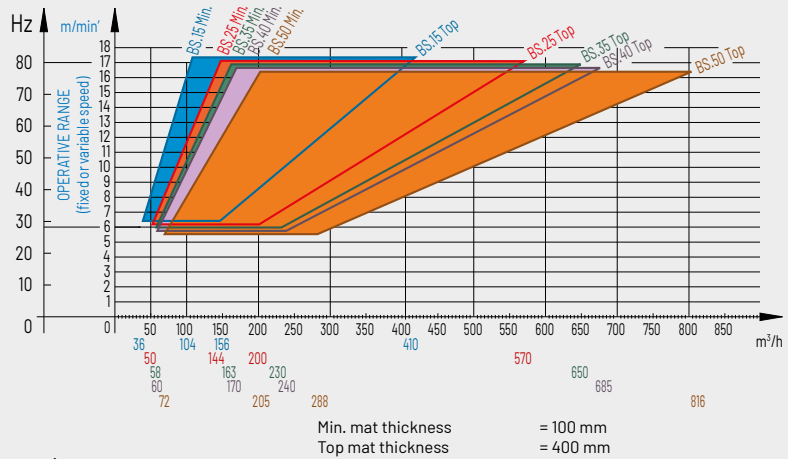
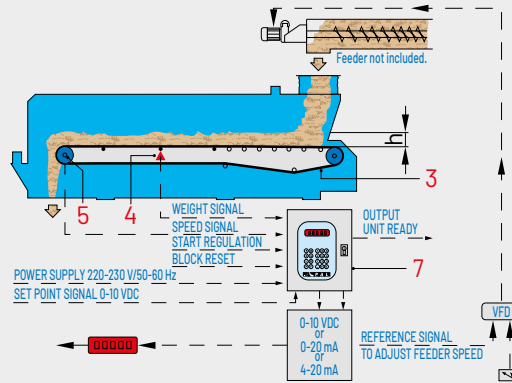
FLOW DETECTOR SYSTEM



- 1 = FEEDING
- 2 = DISCHARGE
- 3 = WEIGHING BELT
- 4 = LOAD CELL
- 5 = ENCODER
- 6 = LOAD CELL AMPLIFIER
- 7 = MICROPROCESSOR
- M1 = DOSING BELT DRIVE
- S1 = SUCTION

S2** = not needed with option AC (Autocleaning System)
 AC* = Autocleaning system based on pneumatic moving floor (OPTION)

FLOW REGULATOR SYSTEM



MODEL	OVERALL DIMENSIONS mm					MAT THICKNESS h	INSTALLED POWER KW
	A	B	C	D	E		
BS.15/2500-10000	2500-10000	3750-11170	2140	1000	1410	Min. = 100 Top = 400	0,55
BS.25/2500-10000	2500-10000	3750-11170	2540	1400	1410		0,75
BS.35/2500-10000	2500-10000	3750-11170	2740	1600	1410		0,75
BS.40/2500-10000	2500-10000	3750-11170	2820	1680	1410		1,10
BS.50/2500-10000	2500-10000	3750-11170	3140	2000	1410		1,10

*Standard supply: fixed speed
 Option: variable speed with inverter

MODEL	CAPACITY BULK MATERIAL		AC COMPRESSED AIR Nm³/h	SUCTION					
	m³/h TOP	t/h		THROUGHPUT WET MATERIAL m³/h		THROUGHPUT DRY MATERIAL m³/h		AIR SPEED m/s	SUCTION PRESSURE Pa
				S1	S2**	S1	S2**		
BS.15/2500-10000	410	According to bulk density	0,02	800	1780	710	1600	29	200
BS.25/2500-10000	570			800	1780	710	1600	29	200
BS.35/2500-10000	650			2x800	2x1780	2x710	2x1600	29	200
BS.40/2500-10000	685			2x800	2x1780	2x710	2x1600	29	200
BS.50/2500-10000	815			2x800	2x1780	2x710	2x1600	29	200

**Not needed with option AC (Autocleaning System)