

FERROUS METALS REMOVERS DEFERRIZING GROUPS – DEF

FFOR CHIPS, SAWDUST AND PARTICLES



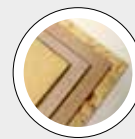
TECHNICAL FEATURES

- Feeding-spreading unit (Option) • Belt conveyor provided of front magnetic pulley • Overbelt magnet • Self-cleaning system for bottom • Drive systems
- Assembled unit complete of containment box.

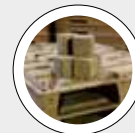
BENEFITS

- Unbeatable efficiency and reliability • Excellent combined removal of ferrous pollutants (and chips containing them) from the bottom and top of the thinly-spread layer of material • Simple installation • Low maintenance.

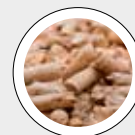
BEST IN CLASS FOR:



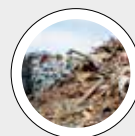
WOOD BASED PANELS:
MDF/HDF
PB/SPB
INSULATION BOARDS



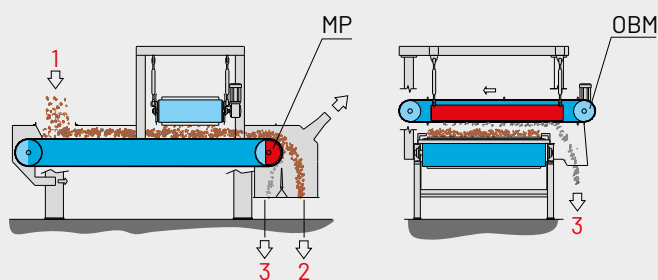
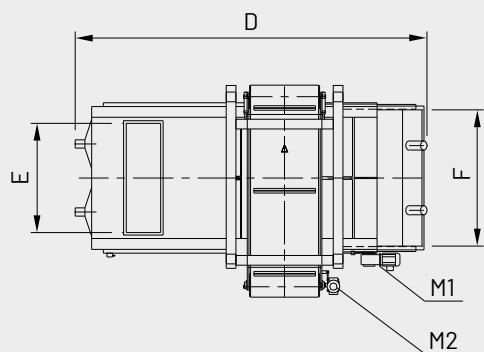
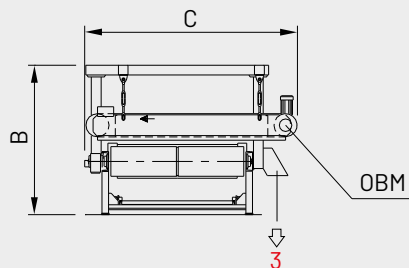
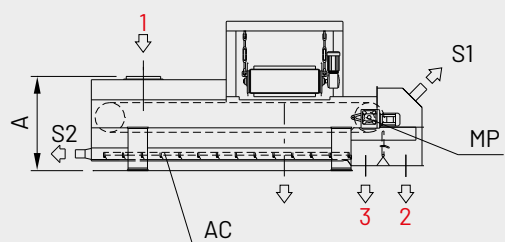
PRESSED WOOD PACKAGING:
PALLET BLOCKS



PELLETS & ENERGY:
WOOD PELLETS AND
BLACK PELLETS
LIME



WOOD RECYCLING AND
WASTE TREATMENT:
WASTE



1 = POLLUTED MATERIAL
 2 = CLEANED MATERIAL
 3 = FERROUS METAL REMOVED

MP = MAGNETIC PULLEY
 OBM = OVERBELT MAGNET
 AC = AUTO CLEANING SYSTEM FOR BOTTOM (OPTION)

M1 = HORIZONTAL BELT WITH MAGNETIC PULLEY
 M2 = OVERBELT MAGNET



2



3

MODEL	OVERALL DIMENSIONS mm					
	A	B	C	D	E	F
DEF.1000/100	1450	2590	2420	5450	900	1230
DEF.1500/150	1450	2302	2840	5450	1400	1750
DEF.1900/200	1450	2302	3290	5450	1800	2100

MODEL	CAPACITY BULK CHIPS m ³ /h	INSTALLED POWER kW		SUCTION S1 + S2			WEIGHT APPROX. kg
		M1	M2	SUCTION m ³ /h	AIR SPEED m/s	SUCTION PRESSURE Pa	
DEF.1000/100	80 - 100	2,2	2,2	3 x 1550	29	200	4750
DEF.1500/150	150 - 180	3,0	2,2	3 x 1550	29	200	6750
DEF.1900/200	200 - 230	3,0	2,2	4 x 1550	29	200	8000

