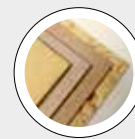
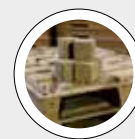


CIRCULAR EXTRACTORS **EXTRAPLUS**

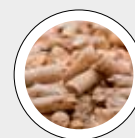
BEST IN CLASS FOR:



WOOD BASED PANELS:
MDF/HDF
PB/SPB
OSB/LSB/FOSB
INSULATION BOARDS



PRESSED WOOD PACKAGING:
PALLET BLOCKS



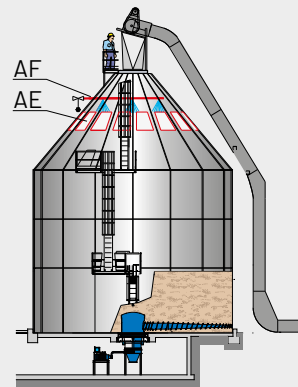
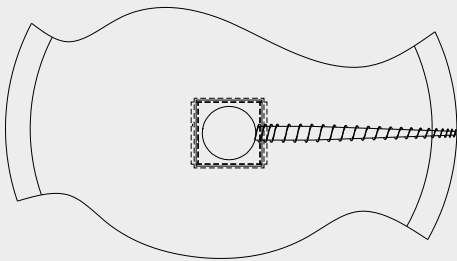
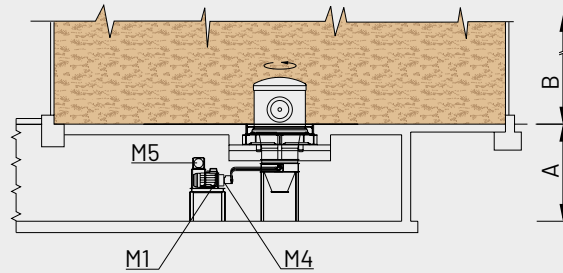
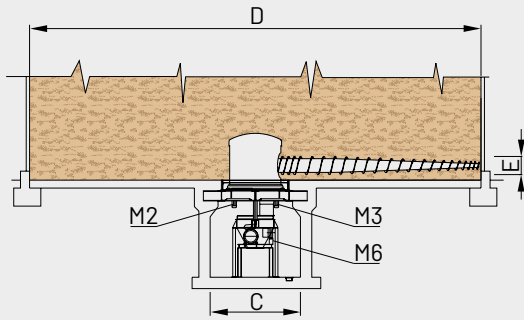
PELLETS & ENERGY:
WOOD PELLETS AND
BLACK PELLETS

TECHNICAL FEATURES

- Rotating turret mounted in the middle of the silo bottom and connected to a fixed structure through a slewing bearings
- Turret rotations by means of two hydraulic motors
- Extraction screw embossed and connected to the turret structure by means of a slewing bearings
- Extraction screw based on progressive pitch and fitted with peripheral milling-teeth
- Extraction screw rotations by means of hydraulic motor
- Hydraulic power unit located close to of the extractor screw
- Cooling circuit of the extraction screw hydraulic motor lubrication
- Automatic grease lubrication circuit of slewing bearings.

BENEFITS

- Suitable for: Large silos, up to 25 m diameter - Materials difficult to extract, e.g. wet-fibrous-compact
- Easy inspection and maintenance
- Excellent mixing of the extracted material
- High efficiency and reliability
- Low maintenance.



FOR DRY MATERIAL ONLY:
AF = FIRE-EXTINGUISHING SYSTEM
AE = EXPLOSION VENTS

M1 = MAIN SCREW ROTATION
M2 = TURRET ROTATION
M3 = TURRET ROTATION

M4 = HEAT EXCHANGER
M5 = HEAT EXCHANGER FOR GEAR OIL
M6 = PUMP FOR GEAR OIL

MODEL	OVERALL DIMENSIONS mm					VOLUME OF SILO m ³
	A	B - top	C	D	E	
EXTRAPLUS	min. 4500	up tp 30000	min. 4000	12000-27000	650-1200	2000-13000

MODEL	THROUGHPUT m ³ /h - top	INSTALLED POWER kW						WEIGHT APPROX. kg
		M1	M2	M3	M4	M5	M6	
EXTRAPLUS	max. 700	According to type of material and height of silo.						max. 22000