

FERROUS METALS REMOVERS

OVERBELT MAGNETS – OBM

FOR CHIPS, SAWDUST AND PARTICLES



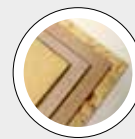
TECHNICAL FEATURES

- Strong magnetic plate (HG)
- Deferrizing overbelt
- Drive system
- Assembled unit complete of containment box.

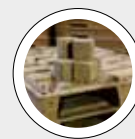
BENEFITS

- High efficiency and reliability
- Removal of ferrous pollutants from chips, sawdust and particles, e.g. during transport with belt conveyors
- Simple installation
- Low maintenance.

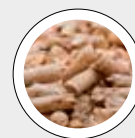
BEST IN CLASS FOR:



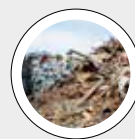
WOOD BASED PANELS:
MDF/HDF
PB/SPB
OSB/LSB/FOSB
INSULATION BOARDS



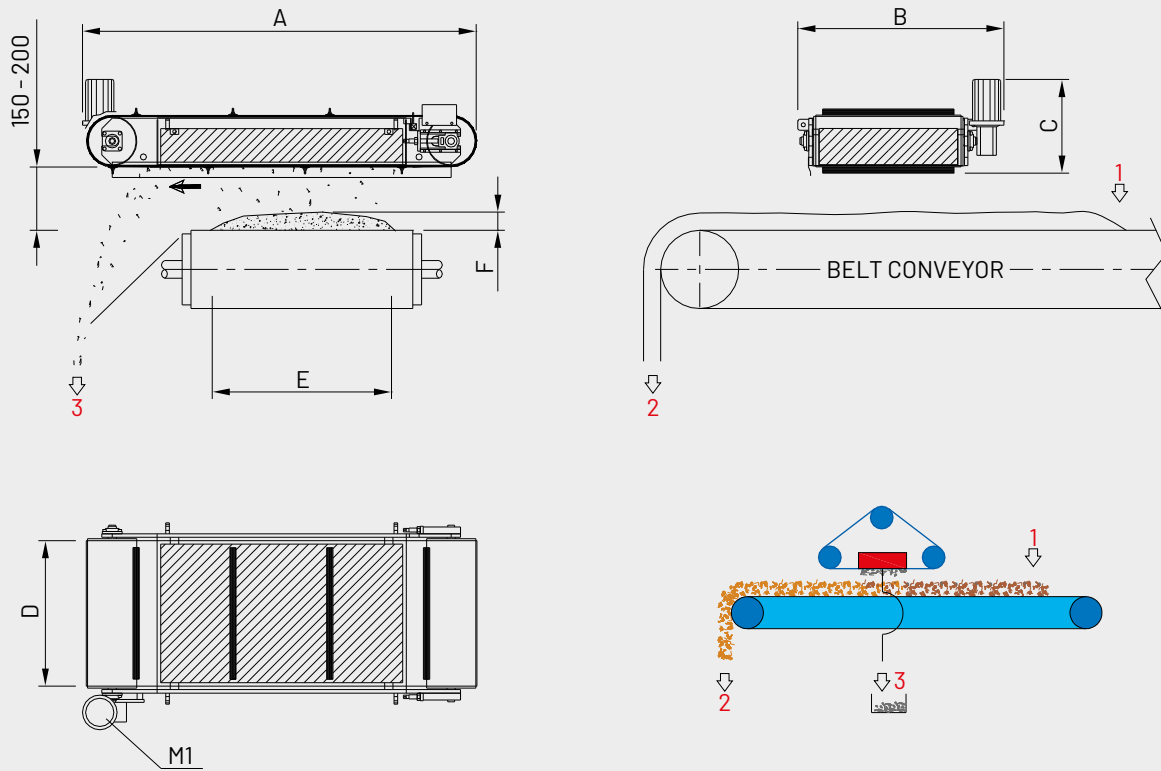
PRESSED WOOD PACKAGING:
PALLET BLOCKS



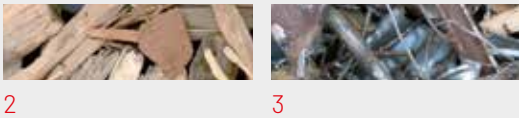
PELLETS & ENERGY:
WOOD PELLETS AND
BLACK PELLETS
LIME



WOOD RECYCLING AND
WASTE TREATMENT:
WASTE



1 = POLLUTED MATERIAL 3 = FERROUS METAL REMOVED
 2 = CLEANED MATERIAL M1 = MAIN MOTOR



MODEL	OVERALL DIMENSIONS mm			
	A	B	C	D
OBM.100/135-HG-VHG	2425	1490	684	1050
OBM.100/175-HG-VHG	2820	1490	682	1050
OBM.100/220-HG-VHG	3270	1490	682	1050
OBE.90/100	2374	1462	810	950
OBE.90/120	2574	1462	810	950
OBE.90/140	2774	1462	810	950
OBE.90/175	3124	1462	780	950

MODEL	CAPACITY BULK CHIPS			INSTALLED POWER kW		WEIGHT APPROX. kg
	m ³ /h	E mm	F mm	M1 MAIN MOTOR	M2 ELECTROMAGNET	
OBM.100/135-HG-VHG	Assessable according to (E), (F) and conveying speed	< 1000	50 - 80	2,2	-	2350
OBM.100/175-HG-VHG		< 1400	50 - 80	2,2	-	3000
OBM.100/220-HG-VHG		< 1900	50 - 80	2,2	-	3800
OBE.90/100		< 800	80 - 120	2,2	4,2	2870
OBE.90/120		< 1000	80 - 120	2,2	4,5	3350
OBE.90/140		< 1200	80 - 120	2,2	5	3840
OBE.90/175		< 1600	80 - 120	2,2	7,5	4810