

MMW200 MILLIMETRE WAVE GAUGE

MMW200

TO MEASURE WEIGHT PER AREA, MOISTURE CONTENT AND THICKNESS OF THE MAT

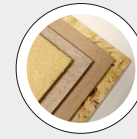


The system performs a rapid and continuous measurement of the weight per area, moisture content and thickness along the transversal section of the mat. It is normally installed just after the pre-press to monitor the formed mat. The analysis takes place without any contact with the mat and is perfectly safe for operators to use, thanks to the Terahertz technology, the same technology applied in the airport body scanner systems.

The source consists of a SFHH (Safe For Human Health) millimetre wave emitter, operating on the same principle as a Level Probe Radar, but designed with emission characteristics that are suitable for online measurement requirements. Thanks to the properties of the millimetre waves and the processing of a sophisticated algorithm, the unit can provide the measurement of the weight per area and thickness not only for the whole mat but for the single layers that form the mat as well.

The system may be connected up as a feedback to the IMAL MWR system which automatically lowers the bars ("skis") which keep the material pressed down upstream of the scalper in areas where weight distribution is lower so that the scalper removes a smaller quantity of material or none at all (the pre-pressed material passes below the level of the scalper without being levelled off).

Consequently, in the areas where there is too much material the bars rise so as not to compress the material, and the scalper can remove any excess material.

BEST IN CLASS FOR:

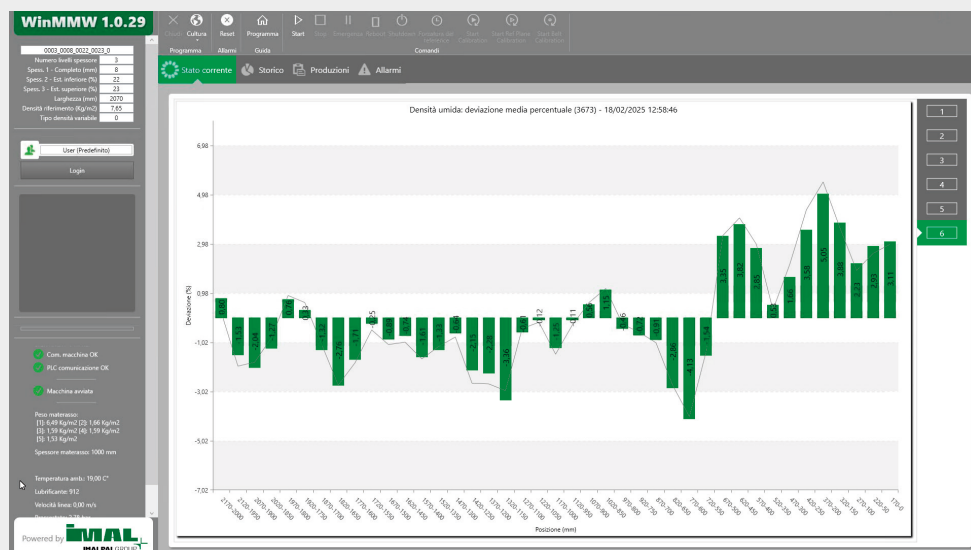
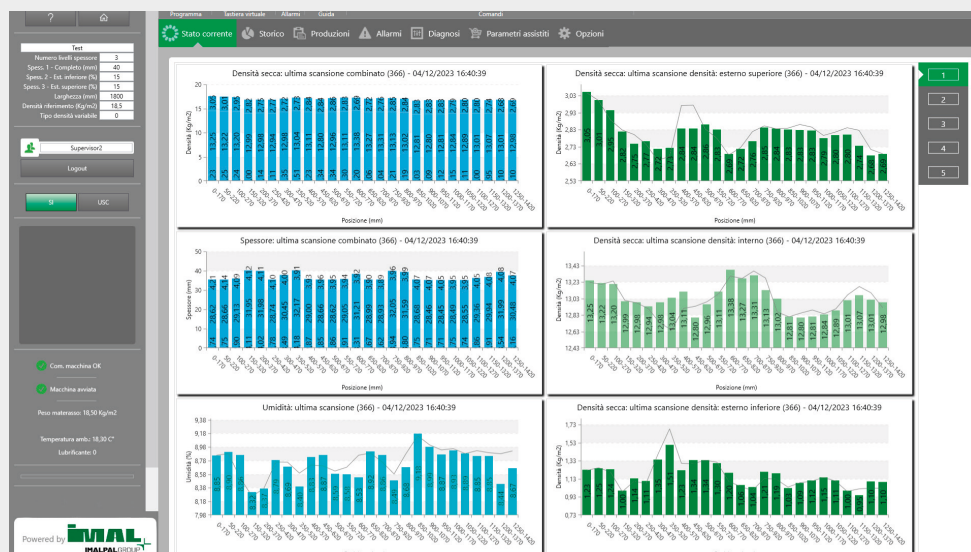
WOOD BASED PANELS:

PB/SPB

MDF/HDF

MAIN FEATURES

- No contact with the mat • No radioactive sources (full intrinsic safety) • Elevated sensitivity and good measuring repeatability
- Possibility of analysing the inner layers individually



It is possible to set the following parameters in the regulation and control software:

- Properties of the mat being analysed (weight per area setpoint, thickness, moisture)
- Alarm management
- Limit ranges (+/- e +/-) on the graphs for the instant values while the mat is being scanned
- Graphs with the average values of the last X scans
- Unit can be monitored from tablets and handheld devices via WiFi and Browser
- Possibility to produce reports and manage all the data in an easier and faster way, based on a modern SQL server database that is easily linked to your company data manager to enable all the necessary analyses now required by the market

TECHNICAL DATA

MAT WIDTH	4000 mm
MAT HEIGHT	200 mm
PRODUCTION SPEED	2.000 mm/sec
MOISTURE RANGE	0 ÷ 15%