



• MDF • PB • OSB • INS. BOARD • PALLET BLOCKS • PELLETS



## CIRCULAR EXTRACTORS

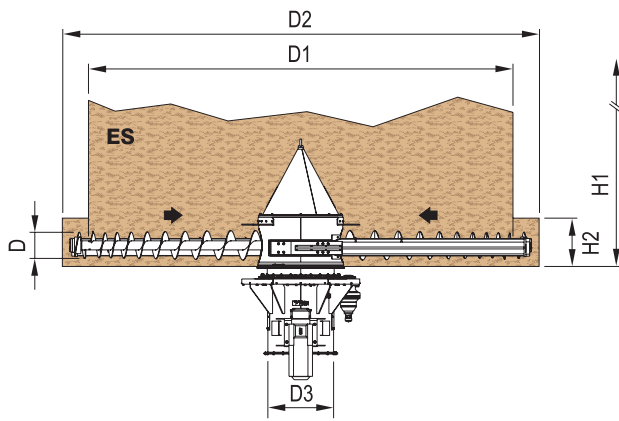
### EXTRACON

#### TECHNICAL FEATURES

- One or two spiral shafts are mounted according to the extraction requirements
- For high production capacity, the machines normally have robust beams able to support the screw shafts on their extremities
- In the case of applications with particularly abrasive materials, we provide technologically advanced wear-resistant coverings applied to the transport surface of the spirals, on the areas concerning tubing and on the crumbling teeth fitted on the periphery of the screws.

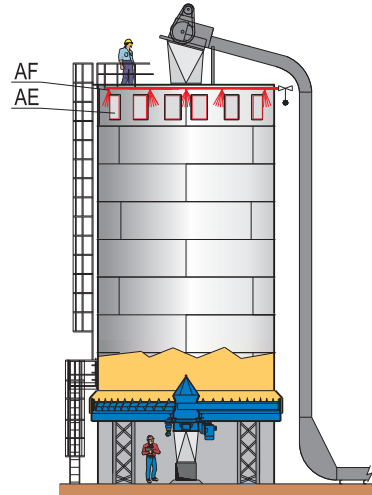
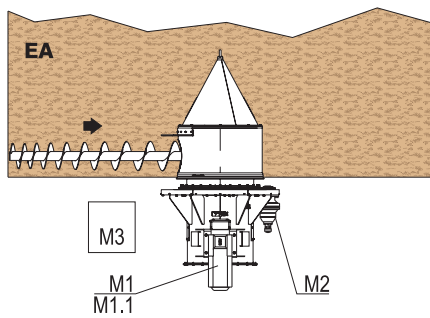
#### BENEFITS

- High extraction capacities with minimum power requirement
- Constant and uniform extraction even in the presence of fibrous and compacted material and without separating them
- Absence of any spontaneous flows inside the discharge hopper
- Routine maintenance can be carried out even on the full silo
- Suitable for silos up to 12 m diameter.



ES= MODEL WITH SUPPORT BEAMS FOR THE SCREWS

EA= MODEL WITH SINGLE SCREW WITHOUT SUPPORTING BEAMS



FOR DRY MATERIAL ONLY:  
AF= FIRE-EXTINGUISHING SYSTEM  
AE= EXPLOSION VENTS

M1= MAIN MOTOR  
M1.1= FAN FOR COOLING

M2= COMAND BY HYDRAULIC POWER PACK  
M3= HYDRAULIC POWER PACK MOTOR

MODEL	THROUGHPUT UP TO m <sup>3</sup> /h	SCREWS		OVERALL DIMENSIONS mm					TOTAL INSTALLED POWER UP TO kW	WEIGHT APPROX. kg
		Pcs	D mm	D1	D2	D3	H1 UP TO	H2		
ES.10	199	1 - 2	300 - 450	4500 - 7000	D1 + 800	1000	20000	740	22	According to machine dimensions
ES.14	399	1 - 2	400 - 600	5000 - 8500	D1 + 800	1400		740	45	
ES.16	499	1 - 2	400 - 700	6000 - 10000	D1 + 1000	1600		740	200	
ES.18	650	1 - 2	500 - 800	6500 - 12000	D1 + 1000	1800		740	200	
EA.10	99	1	300 - 450	4500 - 7000	-	1000	15000	-	22	
EA.14	199	1	400 - 600	5000 - 8500	-	1400		-	45	
EA.16	250	1	400 - 700	6000 - 8500	-	1600		-	200	
EA.18	325	1	500 - 800	6000 - 8500	-	1800		-	200	

\*ES = supported  
EA = self-supporting