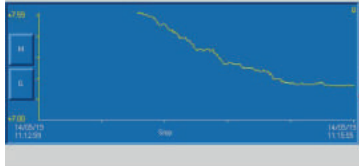


←	↑	↓	print
test progressive number			2.33 %A
11	5	2019 10 20 00	
11	5	2019 10 37 16	9.67 g
		10 39 03	9.45 g
operator			Mike T.
production line			PB Dryer 1
position			Dryer outfeed
info 1			speed 74%
info 2			15c raining

MEASURE END	
initial weight	g: 7.59
final weight	g: 7.19
elapsed time	: 2:58
atro moisture	5.56 %
total moisture	5.27 %

7.19 g	START	TARE
5.56 %	STOP	59.3 c
		2:58
		14/05/19 11:22:31




UM3000 LABORATORY MOISTURE METER TO ASSESS MOISTURE CONTENT

The UM3000 has been designed to measure the amount of moisture contained in the material. The material is dried by the heat coming from an infrared lamp. The method used is unaffected by any side effects which may be caused by colour, density, chemical properties or absorption which, with other methods, could produce unreliable results. It is equipped with a colour touchscreen for entering the data for the sample to be tested simply and rapidly and where the results are displayed graphically and numerically in a user-friendly manner. The unit comes with a printer for printing the report. The results may also be transmitted via Ethernet to the facility's project data management.

MAIN FEATURES

- Internal temperature control
- Integrated thermal printer to print the data and graphics directly
- Rapidly calibrated (directly from touchscreen)
- User friendly interface
- Calibration certification using primary reference samples
- May be used with all kinds of powdery and/or granular material
- Database for the test results as well as various laboratory information to speed up data entry
- Ethernet interface for the automatic data exchange with the IMAL Smartlab and the facility's Project Data Management

ADVANTAGES

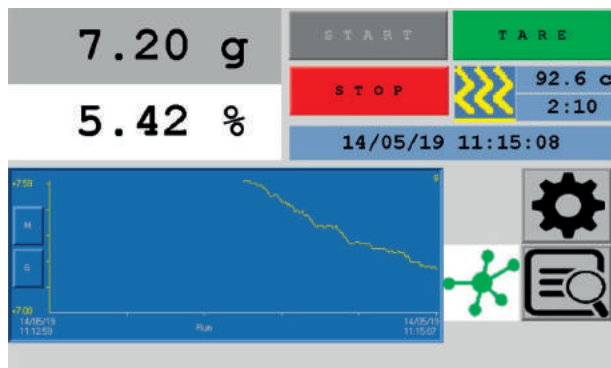
- Elevated measuring precision
- Test carried out rapidly
- Measuring repeatability
- No maintenance required
- Database to store the data
- Ethernet data exchange

TECHNICAL DATA:

Full scale: 1000 g

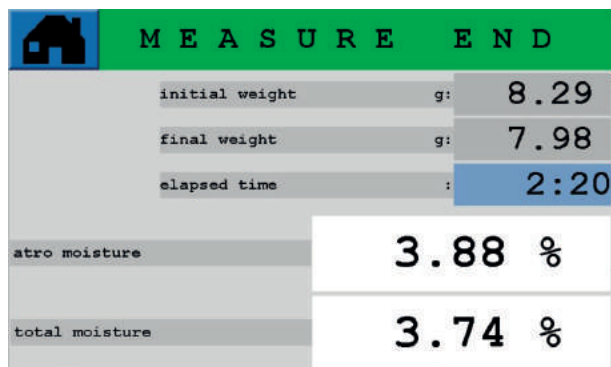
Scale accuracy: 0.01 g

Operating temperature range: +5 ÷ 40 °C



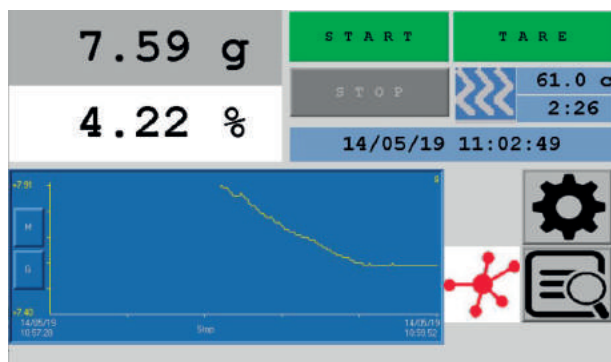
```
#### IMAL UM 3000 ####
11/05/2019
10:22:51      20.45g
10:28:42      17.02g

atro..... 20.15%
total..... 16.77%
```



```
#### IMAL UM 3000 ####
11/05/2019
10:37:16      9.67g
10:39:03      9.45g

atro..... 2.33%
total..... 2.28%
```



```
operator
Mike T.

sample time
11/05/2019      10:20:00

other info:
PB Dryer 1
Dryer outfeed
speed 74%
15c raining
```