



• MDF



## FIBRE RETENTION BIN

**FRB**

BELT CONVEYOR TO HOLD THE FIBRE BEFORE FEEDING IT TO THE LUMP SEPARATOR

### THE MACHINE HAS BEEN DESIGNED TO:

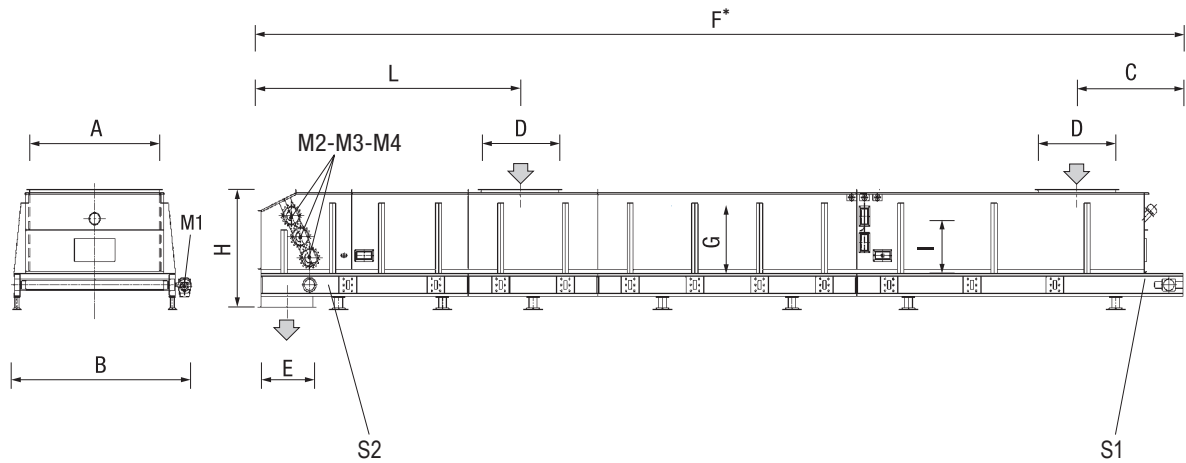
- Hold the fibre for a few minutes before it enters the lump separator, to complete the drying process of the glue onto the fibre
- Obtain a continuous and homogeneous feed along the whole width of the lump separator.

The machine is composed of a belt conveyor on which a retention bin is mounted, and a set of doffing rolls, installed at the belt outlet, have the task of opening the fibre, before it enters the lump separator.

A level control, which can actually “sense” the height of the mat, keeps the height of the mat constant inside the bin. The height signal is then transmitted to the control system, which will provide to the consequent variation of belt motor frequency so as to increase or decrease speed as the need arises (the PLC control system and inverter are not included in the supply).

### MAIN FEATURES

- Very sturdy construction
- Automatic belt tracking system
- Fibre discharged using rotating comb shafts to optimise and fluidise fibre flow
- Internal parts in contact with the fibre made from hot-galvanized iron
- Brush for cleaning conveyor belt
- “Direct mat contact” level control.



MODEL	OVERALL DIMENSIONS mm									
	A	B	C	D	E	Max F*	G	H	Max I Mat. height	L
<b>FRB 10-20</b>	2000	3000	1500	1500	1000	10000	1400	2150	1100	3000
<b>FRB 15-20</b>	2000	3000	1500	1500	1000	15000	1400	2150	1100	3000
<b>FRB 20-20</b>	2000	3000	1500	1500	1000	20000	1400	2150	1100	5000
<b>FRB 10-25</b>	2500	3500	1500	1500	1000	10000	1400	2150	1100	3000
<b>FRB 15-25</b>	2500	3500	1500	1500	1000	15000	1400	2150	1100	3000
<b>FRB 20-25</b>	2500	3500	1500	1500	1000	20000	1400	2150	1100	5000

\*N.B. maximum length reached

MODEL	MAX THROUGHPUT kg/h	WEIGHT kg	MAX BIN VOLUME m <sup>3</sup>	TOTAL SUCTION S1-S2 m <sup>3</sup> /h	MAX. INSTALLED POWER kW			
					M1	M2	M3	M4
<b>FRB 10-20</b>	40000	9500	19	6220	1.5	1.5	1.5	1.5
<b>FRB 15-20</b>	40000	11000	30	6220	1.5	1.5	1.5	1.5
<b>FRB 20-20</b>	40000	13000	41	6220	1.5	1.5	1.5	1.5
<b>FRB 10-25</b>	40000	10500	23	6220	1.5	1.5	1.5	1.5
<b>FRB 15-25</b>	40000	13500	37	6220	1.5	1.5	1.5	1.5
<b>FRB 20-25</b>	40000	15500	50	6220	1.5	1.5	1.5	1.5